

SCREENEZE® & SNAPTRACK PRODUCT SPECS

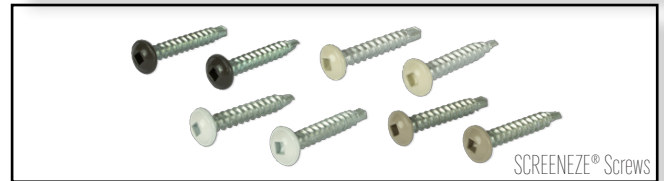
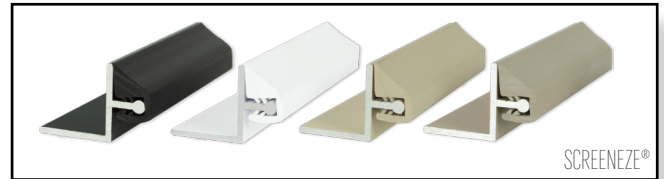
Aluminum Base Channel

- Solid 6061 aluminum alloy
 - Temper T5
- SCREENEZE® - Baked on polyester paint
- SCREENEZE® - 3/4" x 3/4" | 0.062" thick | 8' or 12' in length
 - SNAPTRACK - Powder coated
- SNAPTRACK - 3/4" | 0.062" thick | 8' in length

PVC Vinyl Cap

- Window grade, virgin vinyl with UV inhibitor
- SCREENEZE® - 3/8" x 1/2" | 8' or 12' in length
 - SNAPTRACK - 3/4" | 8' in length

BRONZE | WHITE | SAND | CLAY



SCREENEZE® Screws

- High tensile strength carbon steel metal to wood fastener
 - #10 thread
 - 1 1/4" in length
 - #8 size head
 - Square drive #2 bit
- Tech/drill design for easy penetration through metal
 - High thread for faster drilling
 - 1000 hour salt spray coating
 - Color coordinated with SCREENEZE®

SNAPTRACK Screws

- Countersunk flat head
 - #6 size head
 - 1 1/4" in length
 - Phillip drive
 - Wood screw
 - Stainless steel
- Hidden under vinyl cap when installed
 - 1000 hour salt spray coating

1,000 HOUR SILVER RUSPERT®

Our screws have a three-layer coating consisting of (1) a metallic zinc layer, topped with a (2) chemical conversion film layer, which is finally covered by a (3) baked ceramic surface coating. The finished parts have a dull silver color and will withstand a minimum of 1,000 hour Salt Spray test.